



Moving ahead in the development of the Global Strategy for Women's, Children's and Adolescents' Health

*Dr. Marleen Temmerman
Director*

*Department of Reproductive Health
and Research, WHO
PMNCH Board Retreat
1 December 2014*



EVERY WOMAN
EVERY CHILD

Some milestones on the Every Woman Every Child journey



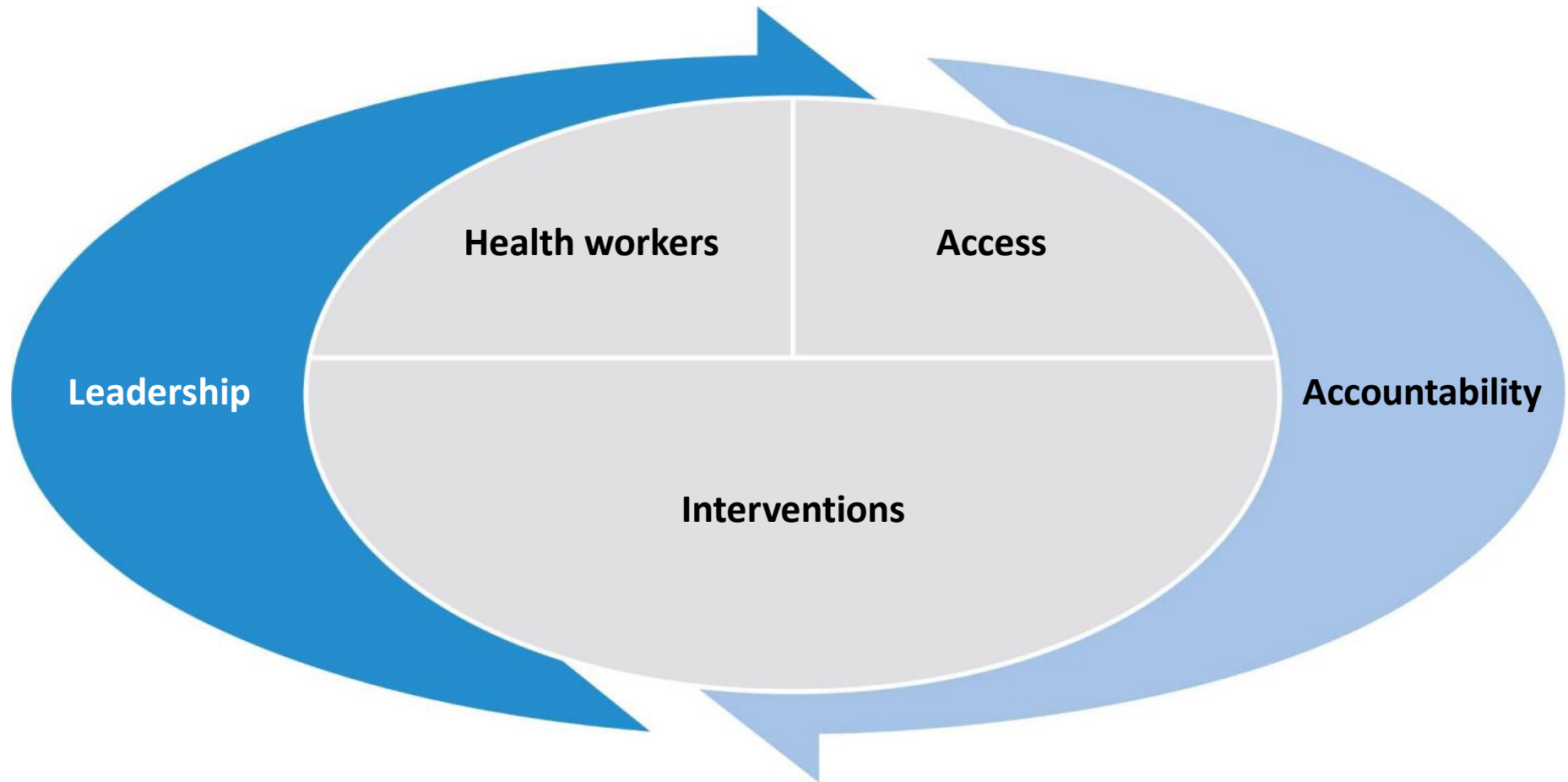
Progress and emerging needs

- Good progress, but not sufficient
 - under-five mortality rate has dropped 49 percent
 - maternal mortality ratio dropped by 45 % between 1990 and 2013
- 222 million women have an unmet need for contraception
- Emerging needs
 - Adolescents
 - Newborns
 - Influence of NCDs, women's cancers



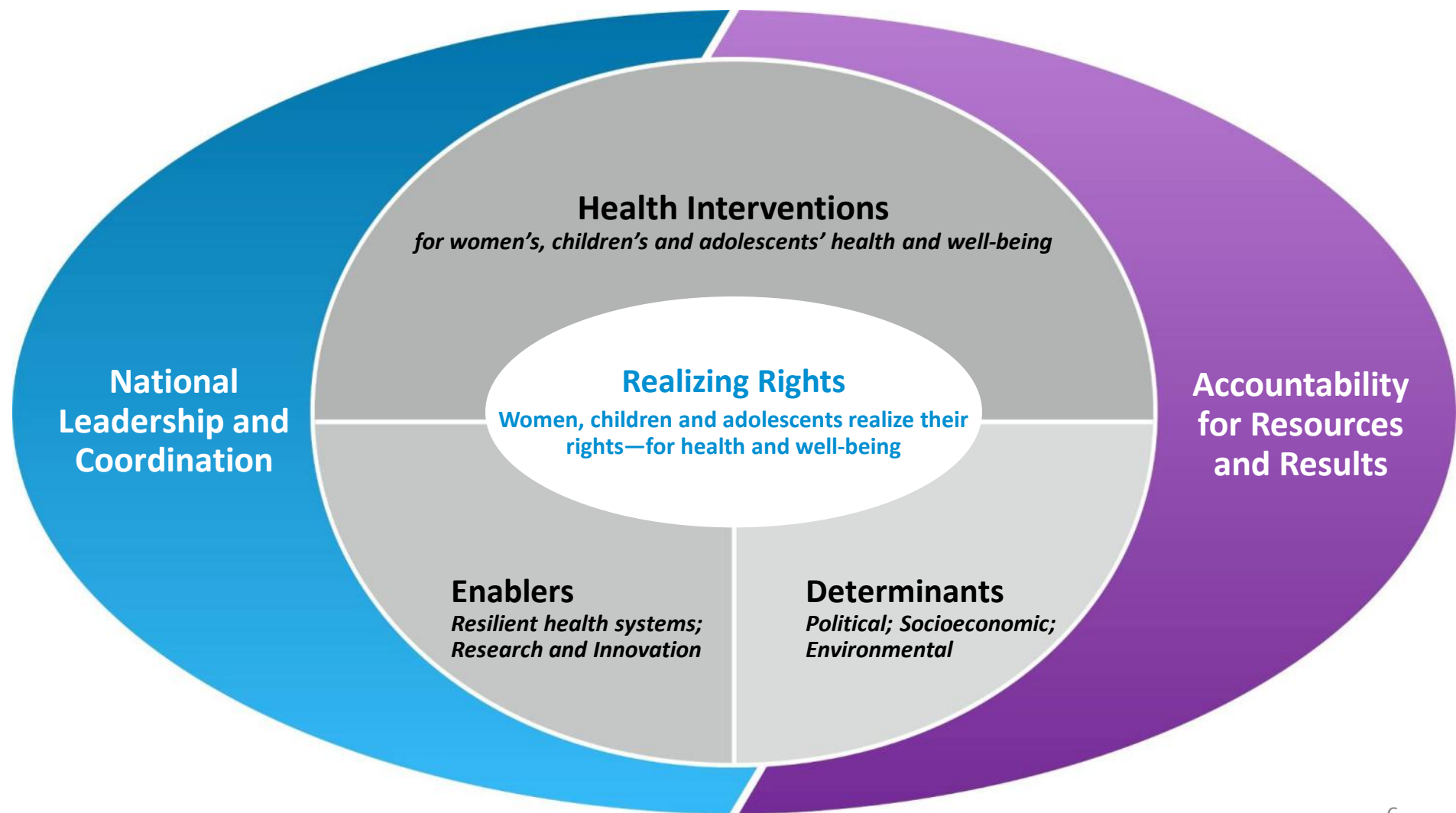
**Updating Global Strategy for Women's and Children's ,
including Adolescent's Health – Discussion started**

Global Strategy Framework, 2010 - 2015



Conceptual framework for the new Global Strategy

Discussion draft



Considerations for the conceptual framework and content

- ***National Leadership and Development Partnerships*** – National plans; parliamentarians, public, private, civil society partnerships and alignment
- ***Inclusion of adolescents*** – address the needs of increasing number of adolescents
- ***Health Interventions*** – end preventable mortality and promote health, inc. sexual and reproductive health and rights, and well-being
- ***Enablers*** – build resilient health systems; promote and use research and innovation across all areas
- ***Determinants*** – political, socioeconomic, environmental determinants; working with health-enhancing sectors
- ***Accountability*** – for resources and results at all levels, and effective, efficient mechanisms
- ***People's capacities and rights*** – recognizing and supporting people's capacities and realization of rights

New information on 'what works': Rationale for updates

1. *Investing in health saves lives and has socioeconomic benefits* (e.g. CIH, GIF)
2. *Health-enhancing effects in other sectors* (e.g. WASH, education, infrastructure)
3. *Making the right investments for each country's unique context*
4. *Evidence for decision-making and accountability* (reliable, relevant, timely)
5. *Innovations that accelerate progress* (interventions and implementation)
6. *Political vision for health and development and effective management over time*
7. *A 'triple planning approach' to: address immediate needs; work towards a long-term vision; and adapt to change*
8. *People's power: women's political and economic participation; community ownership of efforts; rights and legal entitlements, leadership across society*

Note: See slide references for further details.





Thank you

For further information:

- Every Woman Every Child website:
www.everywomaneverychild.org

Please also see the link to the online PMNCH Consultation Platform where you are invited to participate in the consultations and provide feedback.

<http://www.womenchildrenpost2015.org/>



EVERY WOMAN
EVERY CHILD