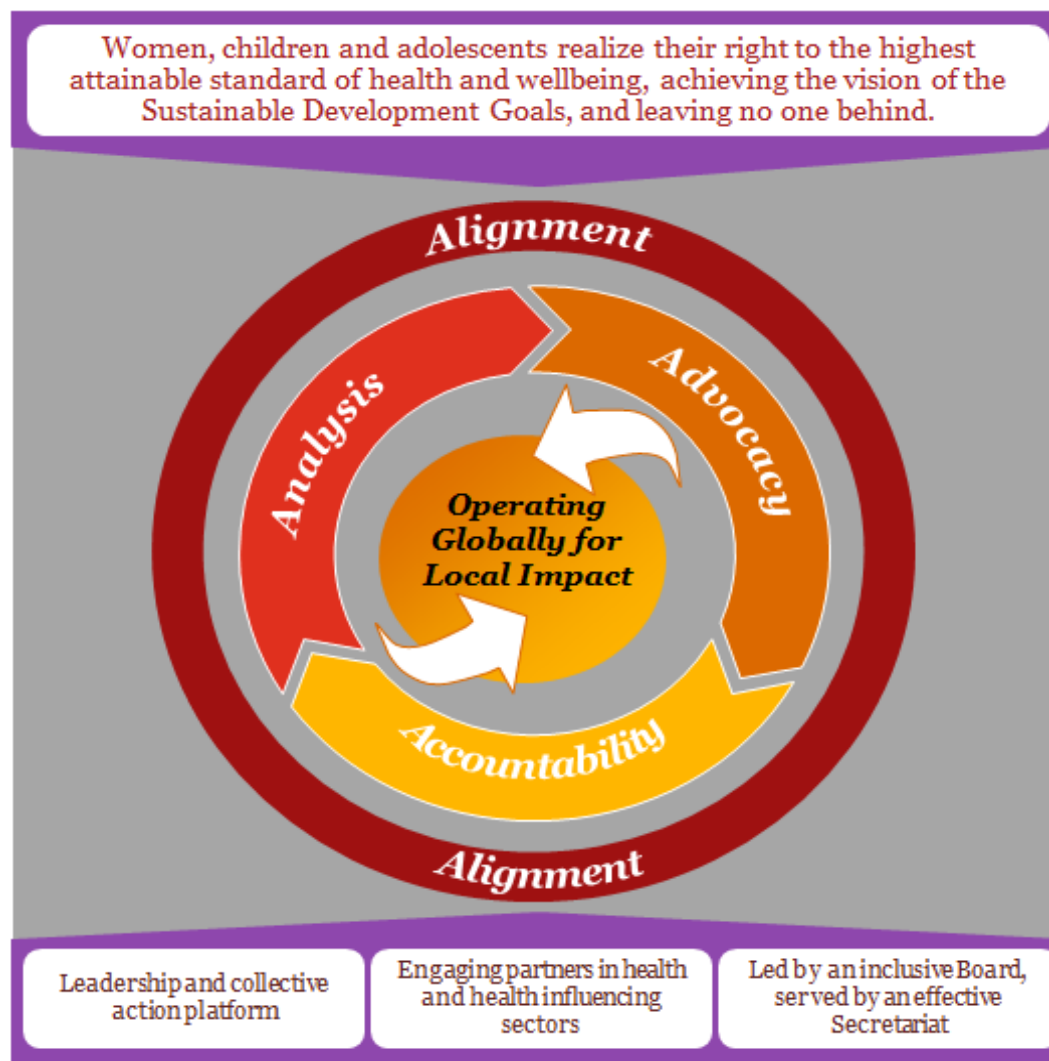


Governance Review Process

C. K. Mishra & Katie Taylor
Board Co-Chairs

Towards an 'updated' governance structure/ processes tailored to PMNCH's new Strategic Framework



Background: Why a Governance Review Process?

- **2 key ingredients** - Refined/agreed Strategic Framework + a tailored governance structure/ processes for the Partnership = **New PMNCH Strategic Plan for the 2016-2020 period**
→ *Governance Review needed - proposed process set out in the Governance Review paper*
- **Based on 2014 Board decision:** Board adopted the recommendation of PMNCH's independent external evaluation -- i.e. that once a new Strategic Framework was agreed, the Board should commission an *independent, in-depth PMNCH Governance Review*.

External Evaluation: Start-up

- **Board Chairs to convene a Governance Review Committee: (GRC)**
- **Limited time-frame**
- **Step 1 : Board Co-chairs to oversee development of Terms of Reference for GRC Criteria for Members & Consultants - ASAP**

In close consultation with EC / Board Constituencies:

- Agree the optimal size of the GRC
 - Agree requirements for GRC membership/ selection process
 - Launch GRC membership nominations
- **Step 2: Board Co-chairs – Official call for nominees for GRC membership**
- **Step 3: In close consultation with Secretariat/ EC:
Board-Co-chairs to oversee process for selecting/ engaging qualified consultants to undertake the review together with the GRC**

Improving our Governance: **Discussion Questions**

- **GRC composition:** external /internal or mixed membership? - Should the GRC be comprised of Board/Constituency members or individuals external to the partnership?
- **Internal working group** for creative process improvement suggestions?
- **Realistic vs. desirable time-frame** for completing the process?
- Any other questions/ comments
 - on the process
 - on the content

Other inputs

- Board Self-Assessment Questionnaire - *Reminder – Please complete and place in box today; comments on how we might improve this process also welcome*
- Results of self-assessment will also feed into Governance review process