

Strategic Advocacy Committee

Presentation to Executive Committee

Ann Starrs, SAC Co-Chair presenting on behalf of SAC leadership group (Co-Chair Githinji Gitahi, Vice Chair Sahil Tandon, Secretary Desmond Nji)

EC Meeting, 14 July 2021



Strategic Advocacy Committee: membership

Leadership:

Co-Chair Githinji Gitahi, Group CEO, AMREF Health Africa

Co-Chair Ann Starrs, Director of Family Planning, Bill & Melinda Gates Foundation

Vice Chair <30 Sahil Tandon, Global Council Member, YET4H Transform Health Coalition

Secretary Desmond Nji, Founder DESERVE Cameroon

SAC mandate

To provide guidance to the PMNCH Executive Committee and Board on strategic opportunities and gaps at global, national and country levels to advance political commitment and action, including through global campaigns.

SAC Membership Composition

- 5 of 8 available seats proposed on the basis of technical skills and experience, as per ToRs for the SAC
- Remaining 3 seats: outreach to be conducted in the IPU Secretariat or MP, GFF, Private Sector
- Broader SAC Reference Group will be created

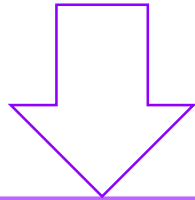
SAC Standard Operating Procedures

- One member or leader of the PECC/K&E WG/Acc WG to be ex-officio SAC members

Strategic Advocacy Committee: key priority areas

Current priority areas

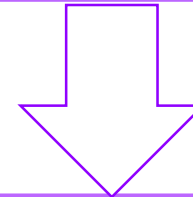
Developing advocacy goals, targets, messages, and activities to be carried forward through complementary strategies. This includes high-level political engagement; community mobilization; constituency engagement; and media outreach



Leading on the development of advocacy models, practices and tools that enable PMNCH constituencies and partners to harness the power of partnership, achieving more together than alone.

Looking to the future

The SAC will also work with rest of PMNCH to respond opportunistically to the changing global reality of COVID-19 to ensure protection of WCAH



Identifying opportunities to ensure that PMNCH's advocacy efforts align with other critical global and country movements and initiatives in support of government-led health systems strengthening, supported by strong multi-stakeholder country platforms.



Knowledge & Evidence Working Group: membership

Chair: *Mark Hanson, Director, Institute of Development Sciences, University of Southampton (UK)*

Vice Chair: *Mike Mbizvo, Director, Population Council Zambia*

Vice Chair: *Karen Walker, President, Council of International Neonatal Nurses*

Secretary <30: *Natasha Salifyanji Kaoma , CEO, Copper Rose Zambia*

K&E Working Group Mandate

To advise PMNCH and collaborate with partners on priority knowledge and evidence for advocacy that needs to be synthesised, translated and made accessible on WCAH, with a particular focus on high-impact interventions and innovations to drive WCAH outcomes.

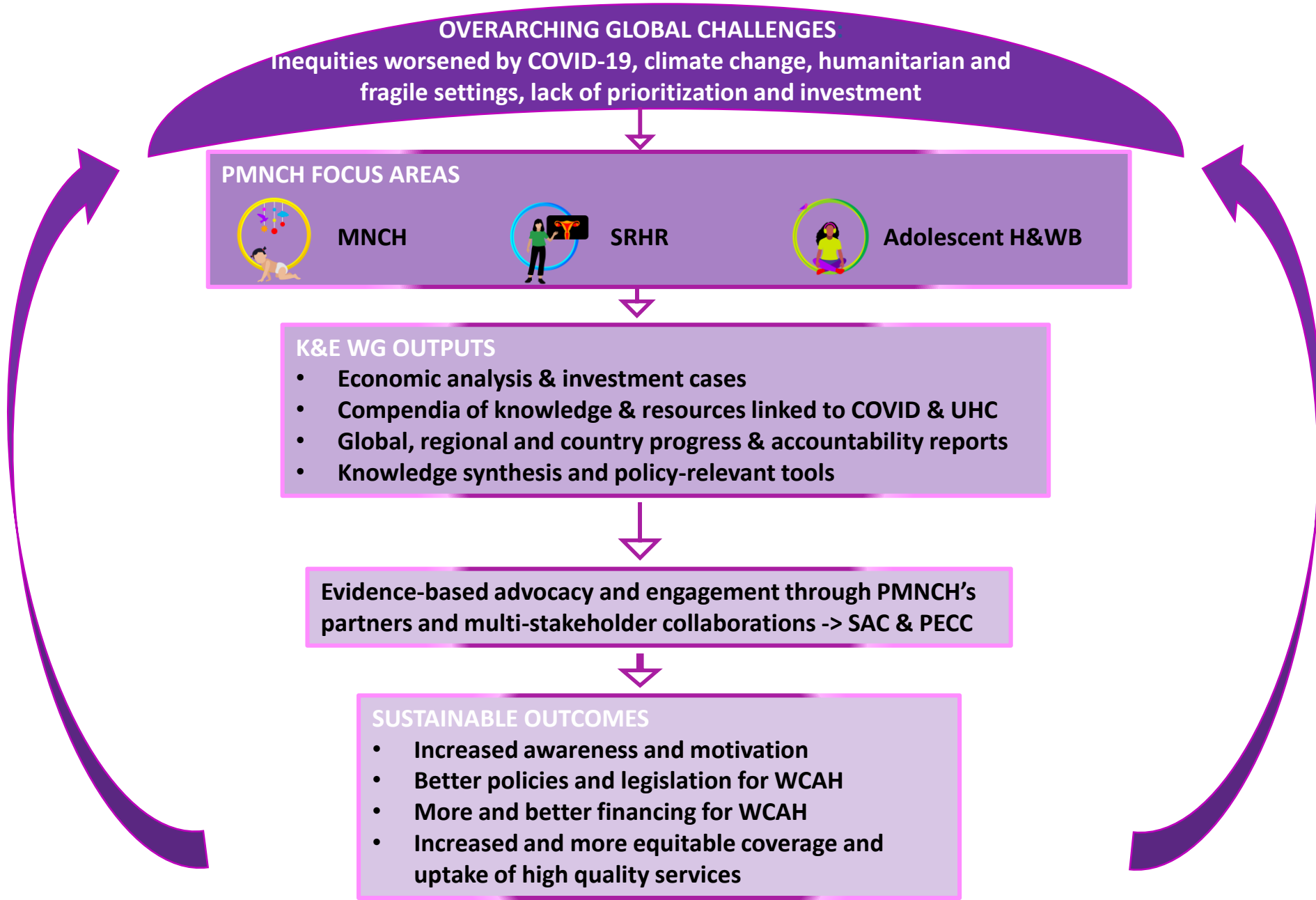
K&E WG Membership Composition

- 19 members, selected on the basis of relevant skills and experience
- K&E WG is establishing a broader and open K&E Reference Group, as well as ad hoc expert groups to oversee flagship initiatives

K&E WG Standard Operation Procedures

- Will work closely with the Accountability WG to ensure synergies
- K&E WG will have close relations with PECC for country-level advocacy

Knowledge & Evidence Working Group: “Pathways to supporting PMNCH advocacy”



Accountability Working Group: membership

Co-Chair Jennifer Requejo, Senior Advisor, UNICEF

Co-Chair Pauline Irungu, Advocacy and Policy Country Lead

Vice Chair Jon Klein, Member of Executive Committee International Pediatrics Association

Vice Chair <30 Sophie Arseneault, Board Director, International Planned Parenthood Federation

Accountability Working Group Mandate

To strengthen and harmonize collaborative accountability efforts, including progress reporting of WCAH as well as CtA commitments, cutting across WCAH in order to support and strengthen PMNCH's workstreams and advocacy function for more effective, aligned and concrete actions for WCAH through SRMNCH multisectoral action and platforms.

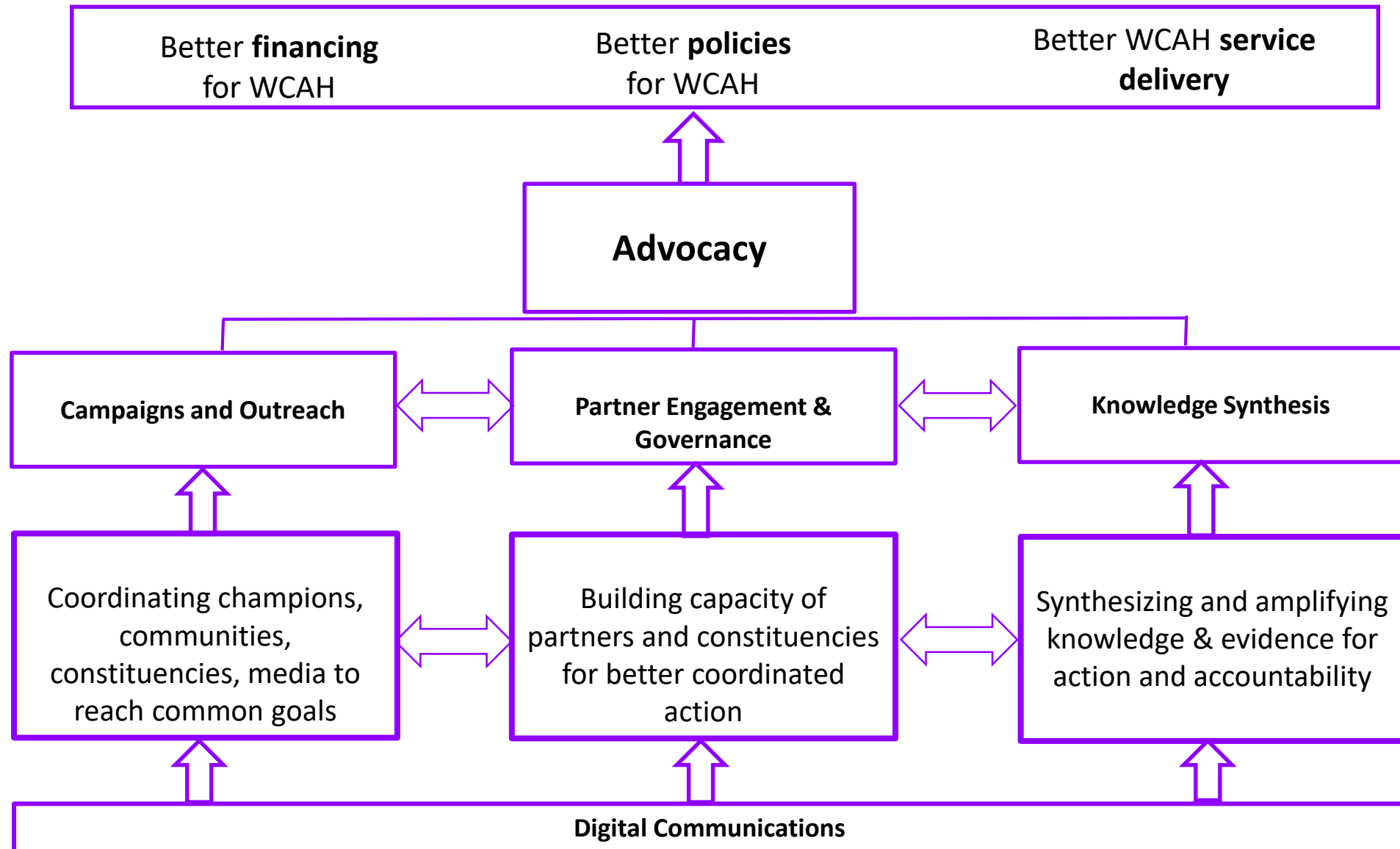
Accountability Working Group Composition

- 15 nominations , selected on the basis of relevant skills and experience
- Will not have a larger Reference Group; experts will be invited to join on certain projects as needed, based on expertise

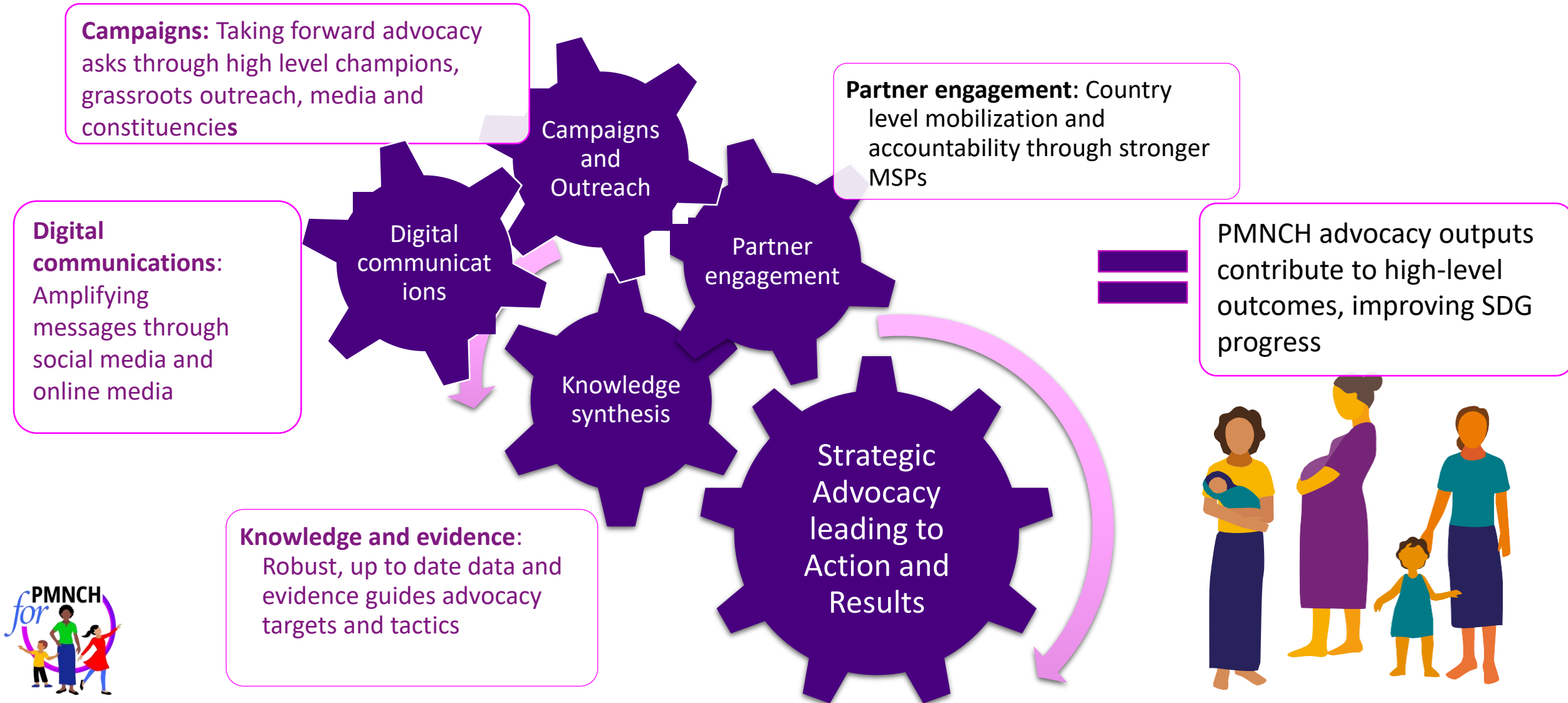
Accountability Working Group Standard Operating Procedures

- Will work closely with the K&E WG to ensure synergies
- Acc WG will have close relations with PECC to promote robust national multi-stakeholder platforms based on the meaningful inclusion of all constituencies.

Core function in the Strategy: *ADVOCACY*



PMNCH 2021-2025 Strategy: Orchestrating joint impact



Thank you!

