

# Protecting the Progress for Women, Children and Adolescents in the COVID-19 Crisis: more and better financing for improved equity

PMNCH Board  
Anuradha Gupta  
Deputy CEO, Gavi  
14 December 2020, Geneva





# Objectives

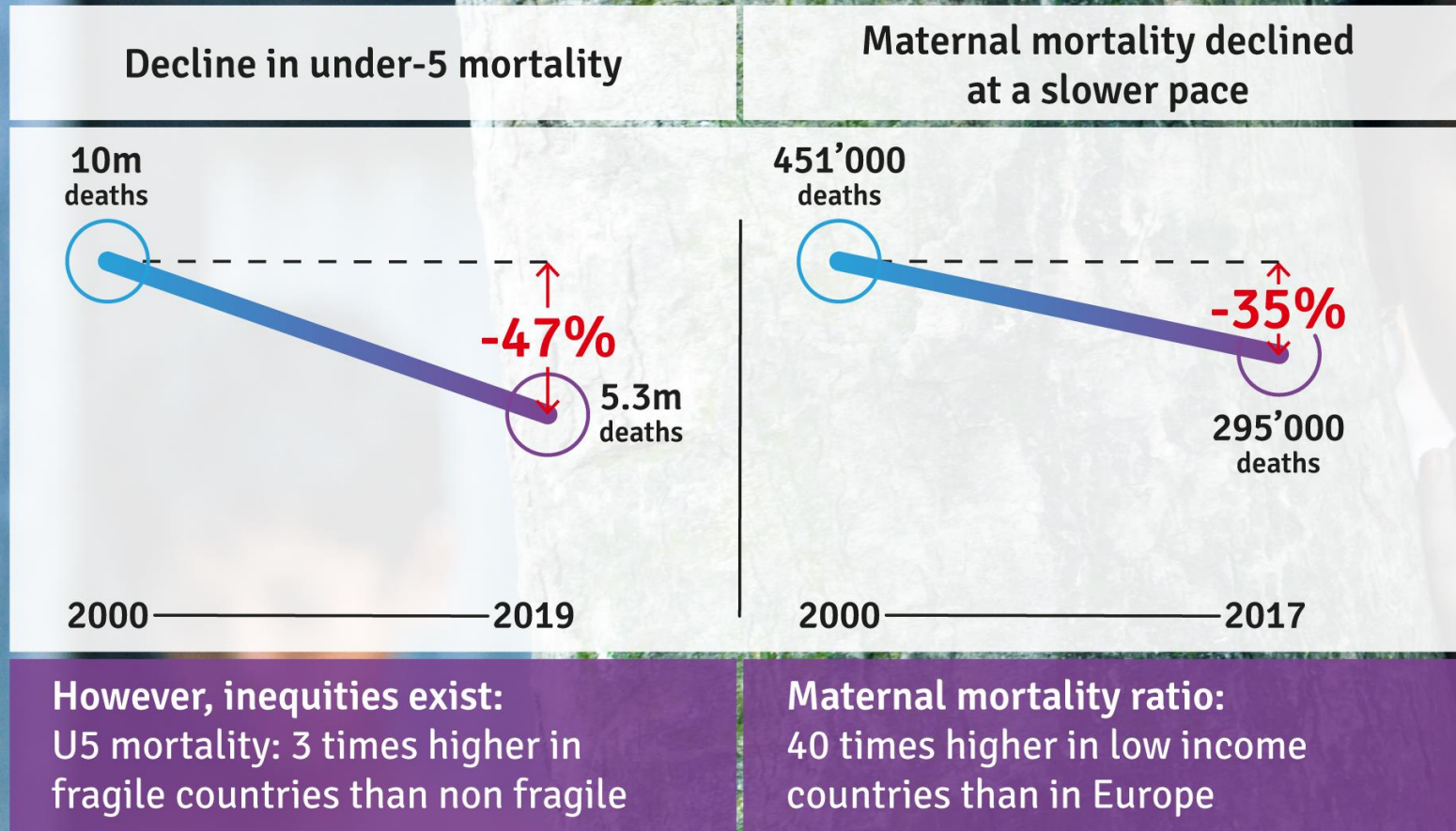
Reflect on the need to protect progress made to date on women's, children's and adolescents' health (WCAH) and emerging challenges

—

Mobilize PMNCH constituencies to target financing to enhance equity and WCAH outcomes

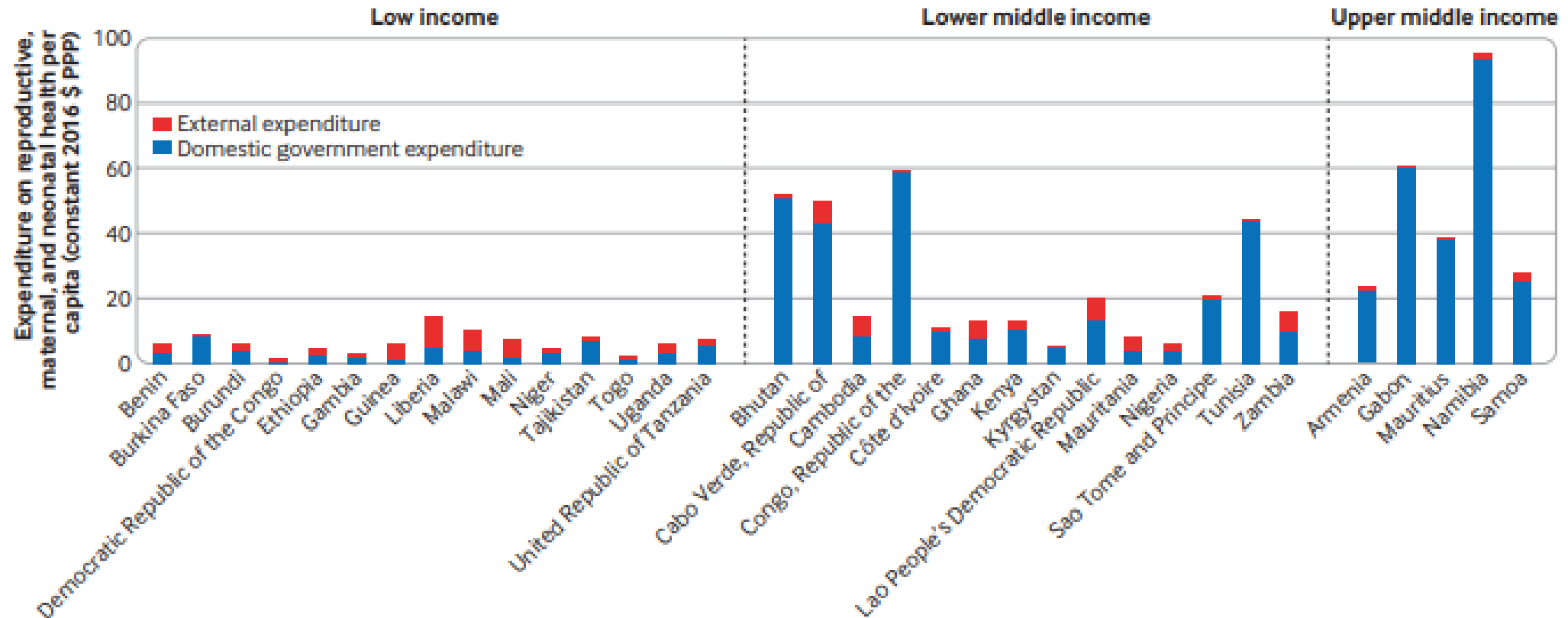


# Remarkable progress made in child and maternal mortality over the last 20 years, but inequities still persist



# Inequities exist between countries and within countries in financing towards SRMNC

- Inequities in expenditure on RMNCH: External expenditure not sufficient to overcome the deep inequities in domestic funding.
- Total out-of-pocket spending more than doubled in LMICS from 2000 to 2017 and increased by 46% in HIC
- Lack of robust and up to date evidence on equity of resource flows at sub-national levels





# Women's, Children and Adolescent's health exacerbated as a result of Covid-19

## POVERTY



5.2% contraction in global GDP pushing 71 million pushed back into poverty

## IMMUNISATION



Disruption in childhood vaccination services causing 15% more children missed in 2020 compared to 2019

## MATERNAL AND CHILD MORTALITY



Spike in stillbirth and newborn mortality  
Additional **1.2 million** children and **56,700** mothers could die in 6 months

## WOMEN'S HEALTH AND WELL BEING



Decreased access to reproductive health services  
Increased incidence of domestic violence

# Zero dose communities carry disproportionate burden of maternal and child mortality

Nearly 50% of children dying of vaccine preventable diseases in Gavi-supported countries are Zero dose, despite only accounting for 13% population.

## POVERTY



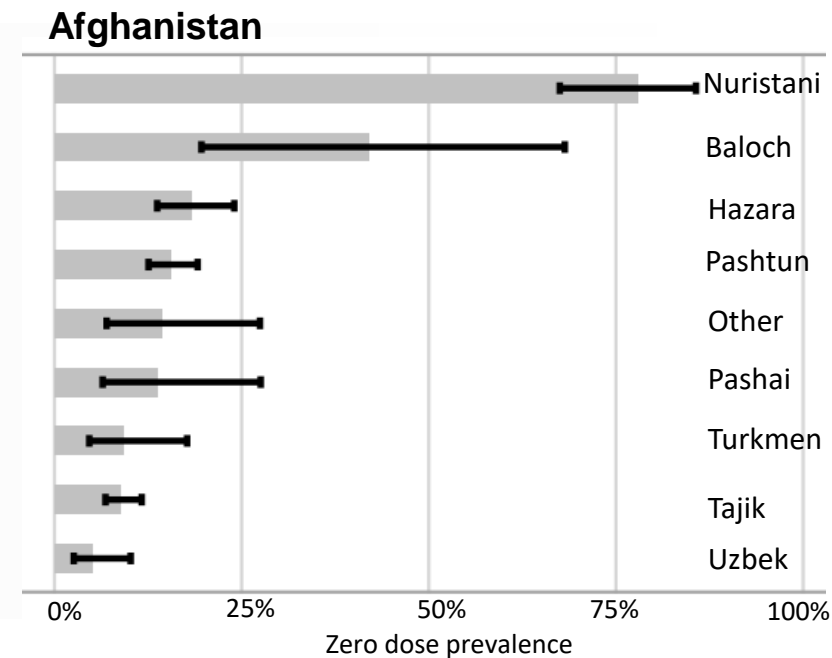
**2 out of 3 zero dose children** live in households surviving on **less than \$1.90** a day

## MATERNAL HEALTH



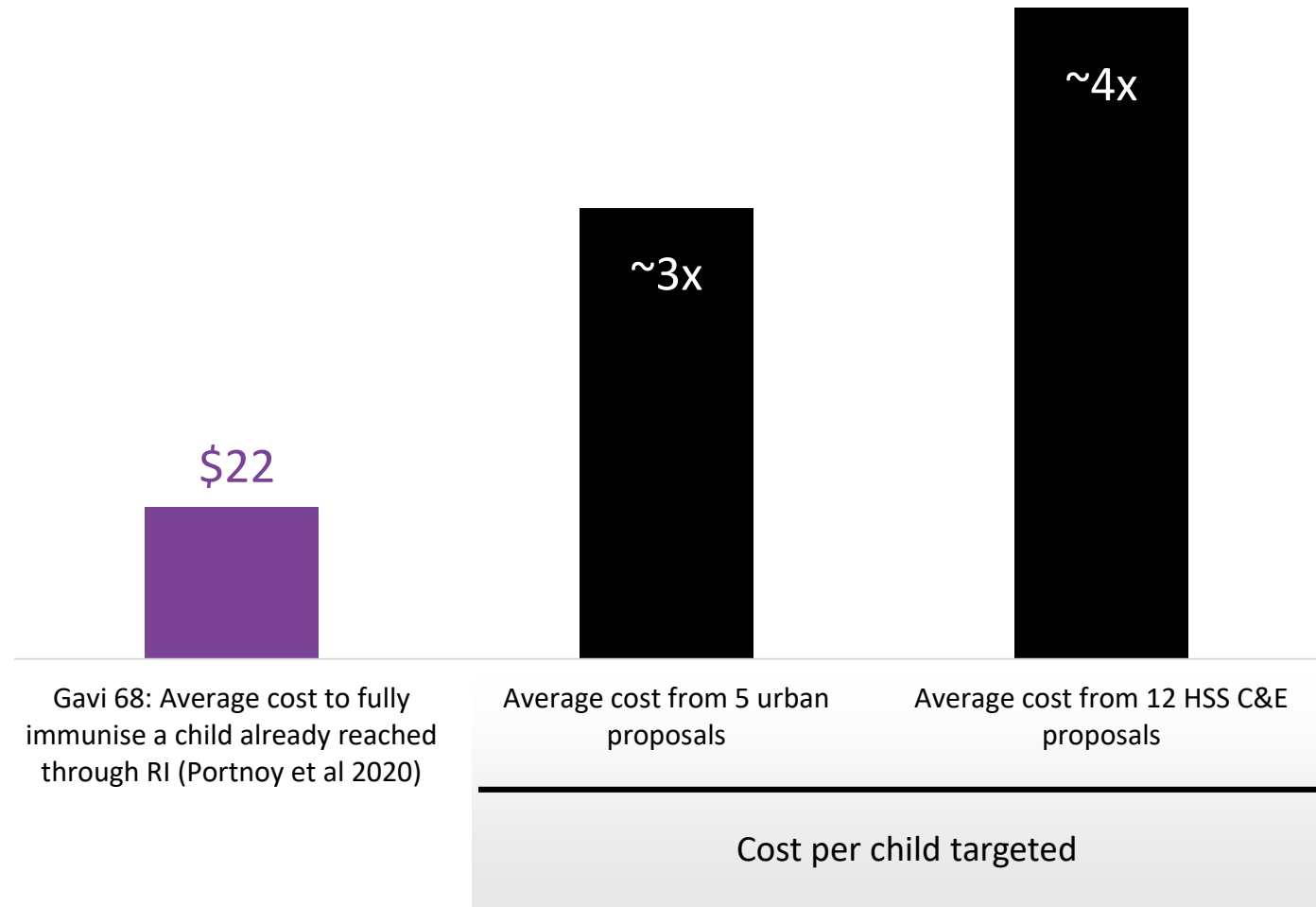
**47%** zero dose less likely to have mother receiving **antenatal care** or **skilled birth attendance**

## ETHNICITY



Large differences in zero-dose prevalence by **ethnic groups** in many countries

Reaching zero dose communities likely to be difficult and costly,  
“Covid-19 premium” likely to make it even more expensive



**Reaching missed communities likely to cost more than reached.**

**Differentiated tailored strategies** needed to reach and provide communities **integrated support**



# Call for PMNCH community to drive advocacy towards equity enhancing financing strategies

- Sub-national data on resource flows to the most vulnerable women, children, and adolescents
- Financing strategies targeted at zero dose and underserved communities
- Better use of existing resources
- Intersectoral collaboration





THANK YOU

