

26 Board Meeting
14 December 2020

Contribution of the Global Financing Facility towards protecting progress and financing for greater equity

Dr Monique Vledder
Head of the GFF secretariat



COVID-19 poses a major threat to essential health services, reversing years of progress

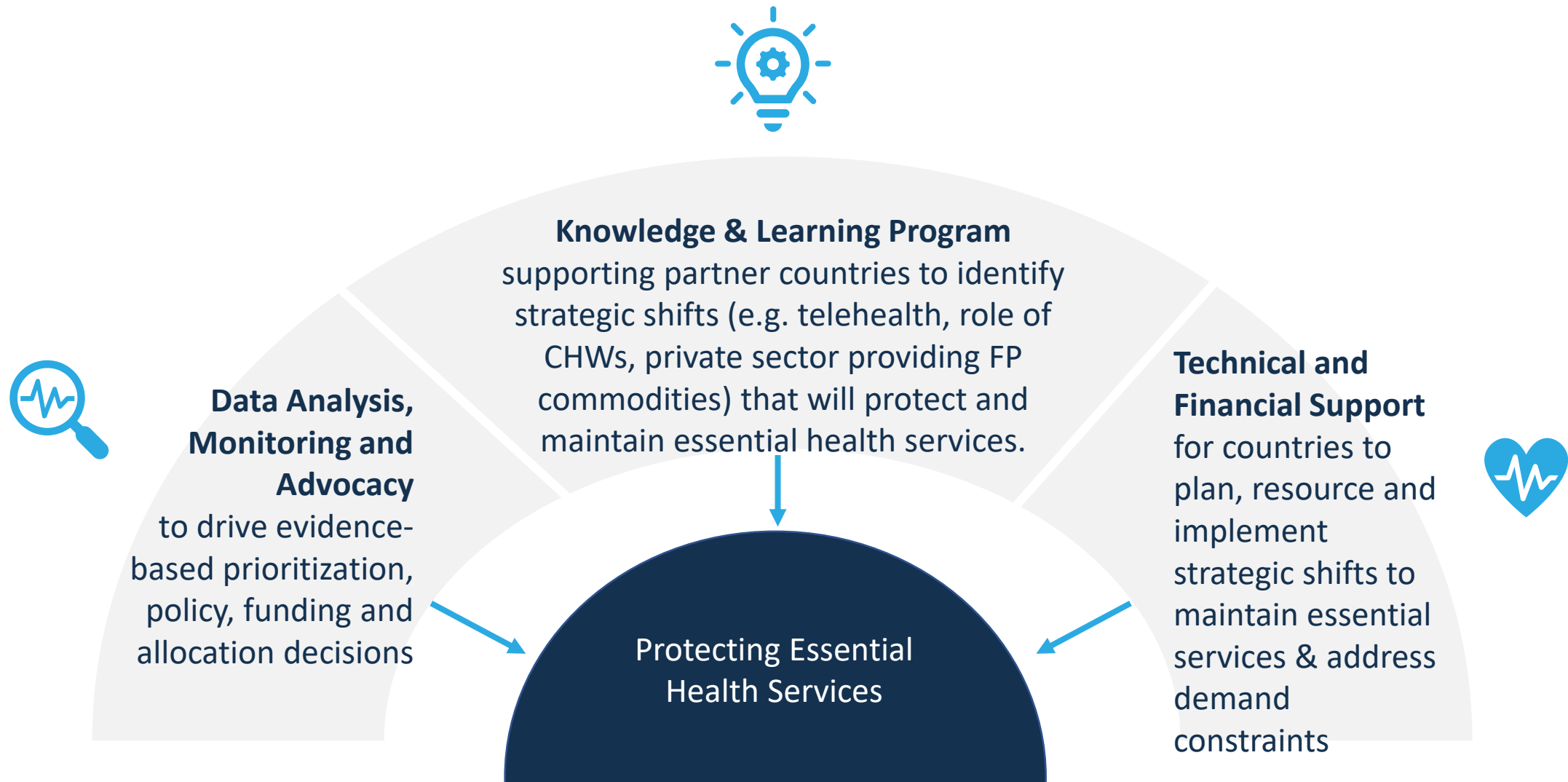
Significant supply and demand disruptions

- **Childhood vaccinations most disrupted** (Liberia: 32% drop)
- **Outpatient consultations fell** in all countries monitored – as high as 1/3
- Decreases in **antenatal care**
- **Projected 8 million unwanted pregnancies** from reduced access to family planning

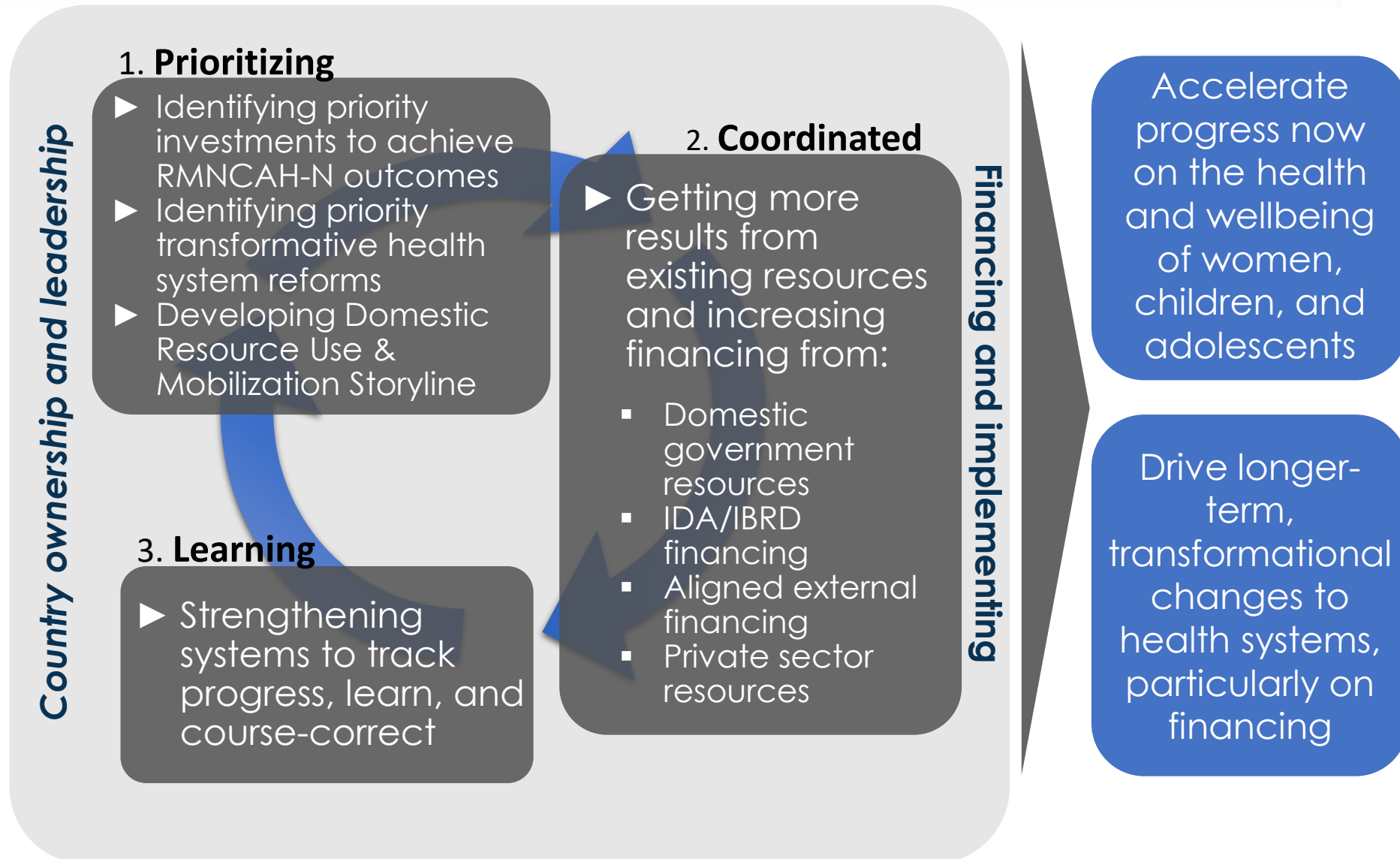
Rising poverty & insecurity, school disruptions

- **Increasing inequality:** In Nigeria, main reason for not seeking care is inability to pay (78% July 2020)
- **Severe economic downturns in partner countries:** -4.4% economic growth in Sub-Saharan Africa in 2020
- **Increasing gender-based violence** due to lockdowns and school closures

GFF is helping countries protect & promote delivery of essential health services during the pandemic ...

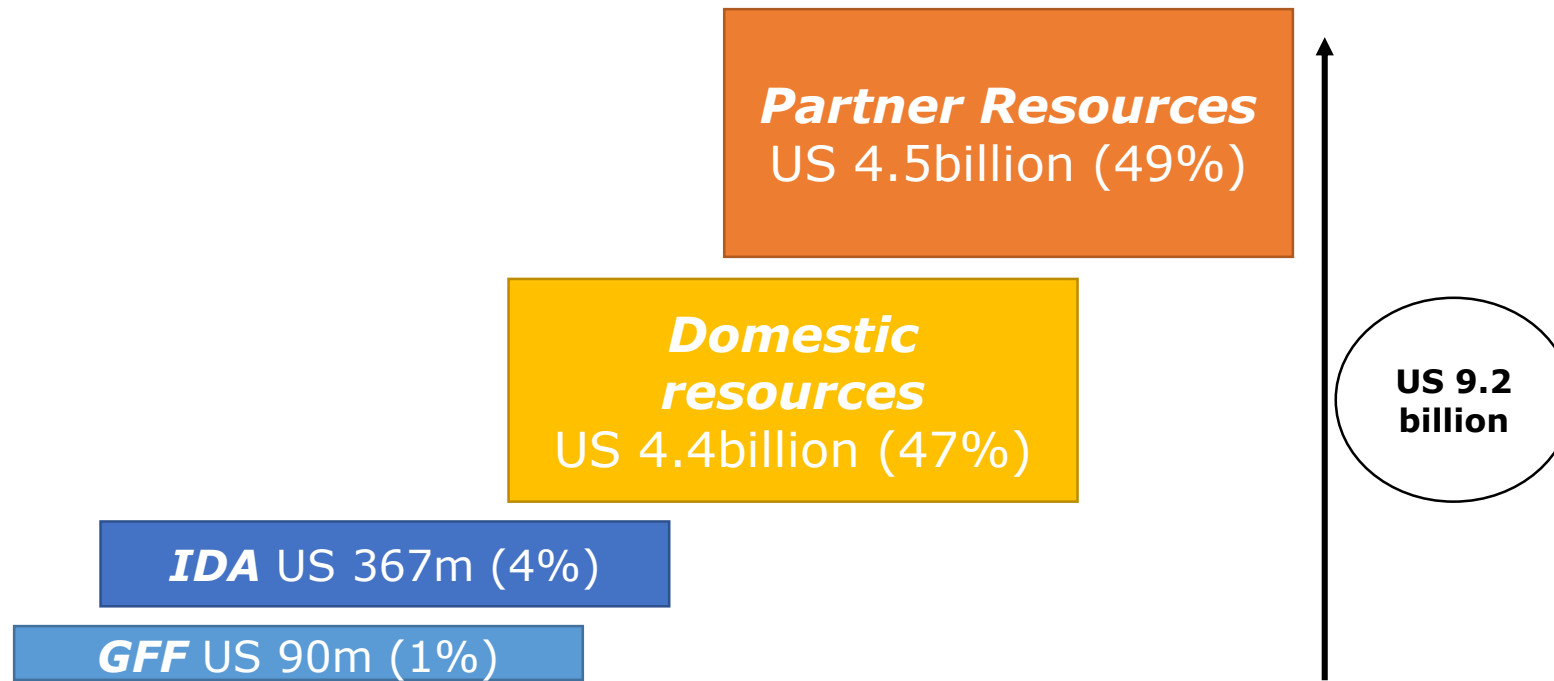


How the GFF helps countries accelerate results



GFF is successfully using small amounts of grant funding to catalyze more and better health financing

GFF's model uses small amounts of **grant** financing linked with larger amounts of **WB IDA/IBRD loans** to catalyze a country-led process and align larger volumes of **domestic & external financing** behind a prioritized national plan



FINANCING RESULTS:

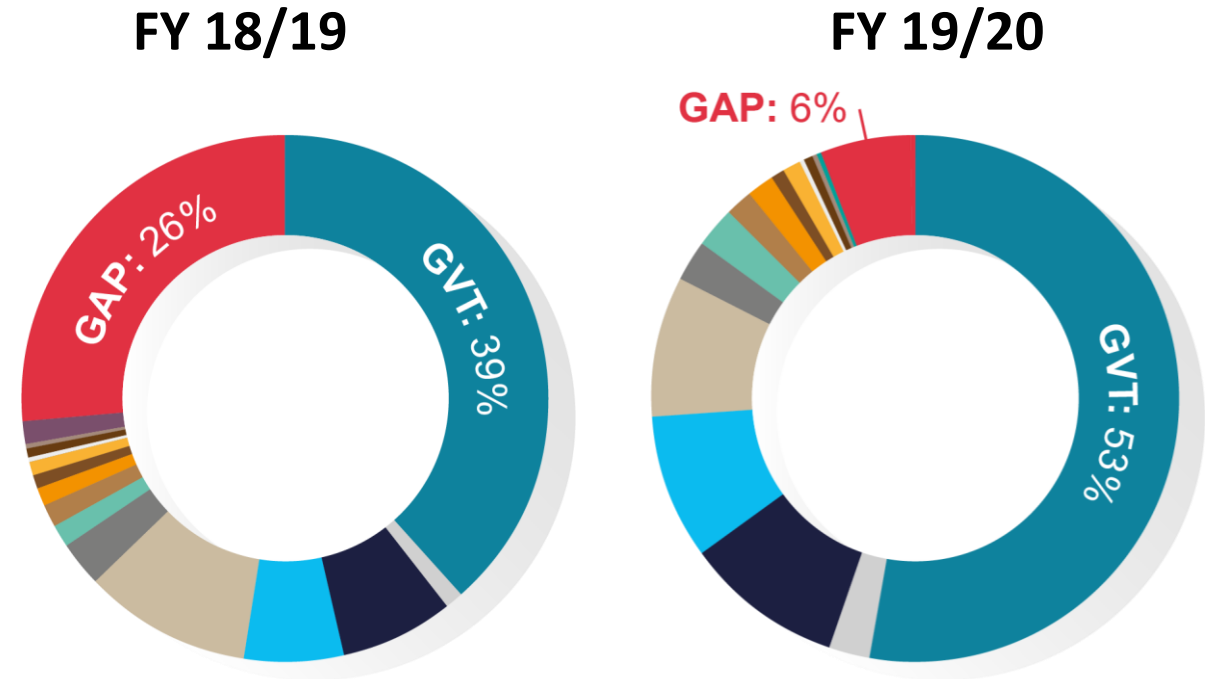
- **DRC:** increased health as a share of total budget from 7% to 10.7%
- **Kenya:** county budget allocations to health increased in 43 of 47 counties
- **Liberia:** share of public expenditure on health increased from 10.5% to 14.1%
- **Senegal:** budget efficiency increased from 80.5% to 90%

GFF's country-led, collaborative approach is promoting local ownership, sustainability and impact

A PROVEN MODEL:

- **Country Investment Case** process drives prioritization of RMNCAH-N → improvements in allocative and technical efficiency
- **Country platform, resource mapping and expenditure tracking help:**
 - **Target** the most effective financing and system strengthening reforms
 - **Align** domestic & external financing
 - **Improve** accountability for results
 - **Strengthen** case for increasing domestic resource mobilization

ETHIOPIA



GFF partnership enables global health partners to achieve more by working together for country plans

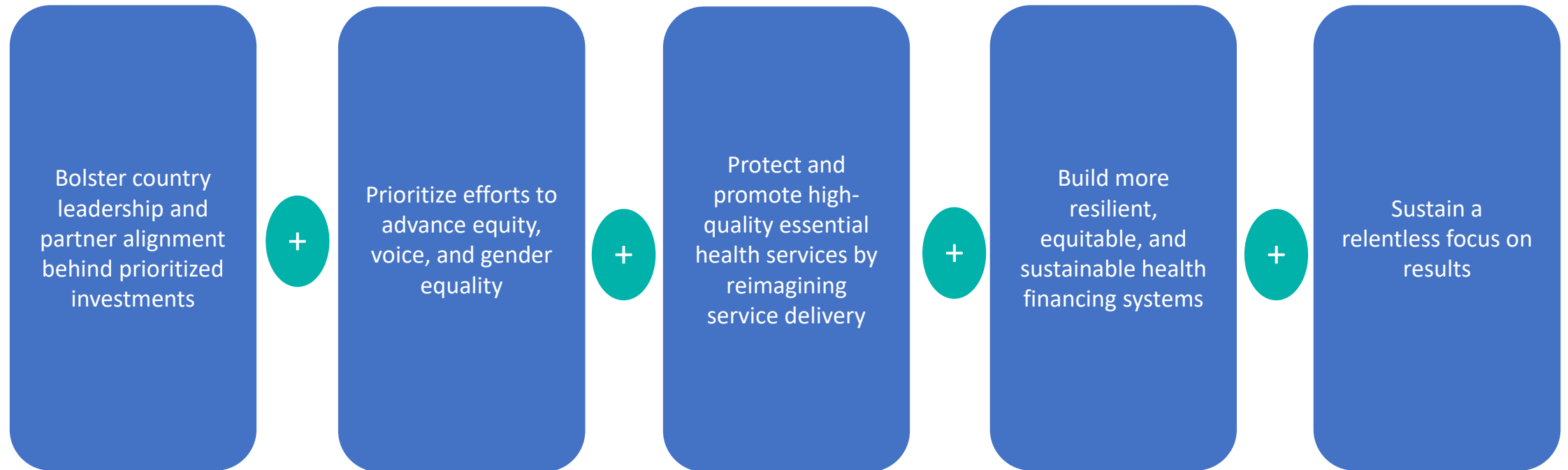
- Country-led Investment Cases helps make WB, Gavi, Global Fund, bilateral donor, foundation and private sector **investments more impactful**
- **Drives global partner alignment** behind government priorities and plans, focus their combined resources on critical system and financing reforms
- Normative guidance and technical support by WHO & UN agencies have more traction when **linked to priority reforms** and supported by major investments
- GFF-supported country platforms help bring CSO & youth perspectives to inform policy and funding decisions & **strengthen accountability**
- **Unleashes power & innovation of the private sector** for public health goals
- Provides **multi-stakeholder coordination platform in countries** to achieve goals of [SDG 3 Global Action Plan](#) and [UHC 2030](#)

Promotes development effectiveness and fosters permanent shift in the global health and development paradigm toward country sustainability

GFF Strategy for 2021-2025 – Embodying PMNCH C19 call to action

- **PROTECT and PROMOTE** essential reproductive, maternal, neonatal, child, adolescent health and nutrition services. **ACCELERATE** progress towards ensuring all women, children and adolescents can access the quality, affordable health care they need to survive and thrive.

Five Strategic Directions



GFF new strategy will maintain laser focus on protecting essential services for WCA as countries prepare for vax roll out

- **Protect essential health services for WCA :** GFF's comparative advantage among global health institutions in COVID-19 response is to help countries develop and implement effective strategies to adapt and strengthen frontline community and primary care services, with laser focus on proven sexual, reproductive, maternal, newborn, child health and nutrition interventions
- **Support ACT-A and countries on rollout of COVID-19 tools while ensuring countries do not divert from the essential services agenda :** through technical support on prioritization, service delivery adaptation, financing, system and demand constraints + coordination and resource mapping among development partners through GFF-supported country stakeholder platforms

GFF new strategy will double down on its efforts towards addressing equity gaps

- **Amplify the voice and experience of women, children and adolescents:** scale up support to CSO engagement and community and users' feedbacks
- **Expose hidden inequities:** advocate for more equitable resource allocations in partner countries through resource mapping and expenditure tracking data and incentives to bring money to the frontlines (DLIs, RBF)
- **Mobilize demand for services:** use of catalytic funding to shape WB IDA/IBRD operations outside of the health sector, particularly in operations on education and social protection and human capital (CSE, Cash transfer programs)
- **Prioritize gender equality in all stages of GFF engagement with countries:** operationalize GFF Roadmap for Gender Equality with 6 action areas for impact including gender-responsive monitoring and data systems, engagement with local women's organizations and female leadership program

Estimated total GFF RM need with \$1.2 billion in pledges needed in 2021

**In 2021, GFF
will need
US\$1.2
billion for:**

- Addressing impact of COVID-19 on essential services for women, children and adolescents
- Support effective delivery of vaccines at primary & community level
- Covid-19 grants for essential services linked to frontloaded IDA
- Implementation of the strategy refresh

2021-2022

Support of PMNCH will be key to GFF success

- Successful GFF RM campaign and delivering on new strategy requires support **from PMNCH constituencies and strong advocacy**
- **PMNCH can play a lead role** through grass top and grassroots advocacy

Asks:

- Jointly develop evidence for advocacy – Update Global Investment Framework for WCA
- Join our RM leadership group and provide thought leadership for GFF RM campaign
- Engage as champions and leverage the partnership's network for joint advocacy in support of WCA