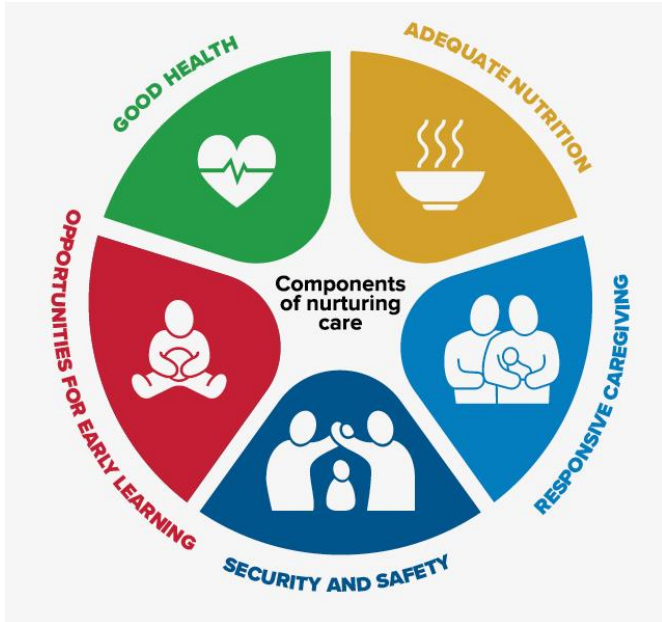


Early Childhood Development

Working Group Presentation



Overview

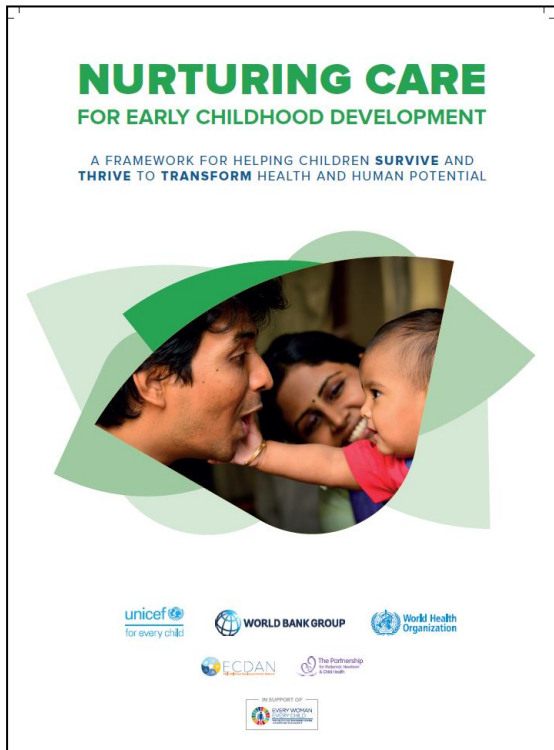


The most formative
experiences of young children
come from
NURTURING CARE

- 250 million children under the age of five in low- and middle-income countries are at greater risk of sub-optimal development due to poverty and neglect.
- The human brain develops faster from pregnancy to age three than at any other time.
- Early investment has lifelong and intergenerational benefits.
- Multisectoral collaboration is essential and the health sector has a special role to play



Nurturing Care Framework for ECD: A roadmap for action



A framework for
helping children
SURVIVE and **THRIVE**
to **TRANSFORM**
health and potential

- WHO, UNICEF, the World Bank, PMNCH, the Early Childhood Development Action Network, among others.
- Launched at the World Health Assembly (May 2018)
- Implementation will require a joint action plan that:
 - I. Expands political will and increases investments;
 - II. Creates enabling environments from policy level to the household;
 - III. Builds capacity of partners to plan and implement in partnership; multi- and cross-sectorally



Relevant global targets



Nurturing care is at the centre of the global strategy and the SDGs

But how do these contribute to the EWEC targets for ECD?

- 36 countries have integrated, cross-sectoral plans to ensure equitable access to quality ECD
- 36 countries that have strengthened social protection for citizens, with a particular focus on children



PMNCH Added Value

The Partnership's contributions can be grouped into four broad categories:

- **Promoting intersectoral collaboration and harmonization**
- **Managing knowledge and evidence**
- **Advocating for critical positions**
- **Tracking and reporting**



ECD Working Group Questions

- I. Identify 2 to 3 **frontier issues regarding early childhood development** that should be given priority by PMNCH. Why should they be given priority? Keeping in mind the 4As (Alignment, analysis, accountability, advocacy), what role do you envision PMNCH would play in addressing these issues?
- II. What suggestions do you have for **sharpening the proposed deliverables** for the ECD workstream to ensure PMNCH's business plan **contributes to achievement of the EWEC targets**?
- III. What role should PMNCH play in securing **ECD-related commitments**? What commitments should PMNCH prioritize?
- IV. What role(s) should PMNCH play in supporting **dissemination, understanding, and integration of nurturing care** into advocacy campaigns, health systems, policies, and budgets?

